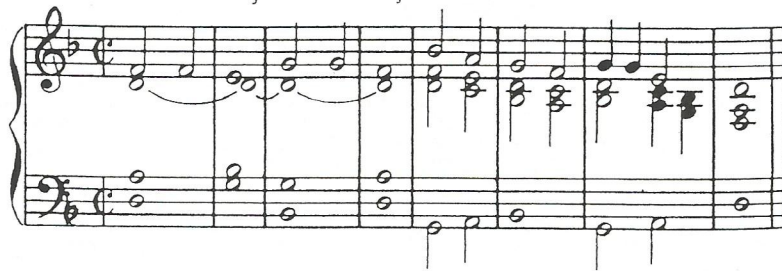


P./N. Bo-že moj, Bo-že moj, za-što si me osta-vi -o?



Ps 22

P. 1. Ko - ji me vi - de, podru - gu - ju se me - ni, raz - vlače u - sne, ma - šu gla - vom:
 2. Op - ko - li - o me čo - por pa - sã, rulje me zloči - načke o - kruži - le.
 3. Među se ra - zdijeli - še halji - ne mo - je, za odje - ću mo - ju ba - čiše koc - ku.
 4. Braći ću na - vije - štati i - me tvo - je, hvalit ću te u - sred zbo - ra.

Musical score for Psalm 22, verses 1-4. It includes a vocal line and piano accompaniment. The lyrics are written below the vocal line.

1. »Uzda - o se u Go - spo - di - na! neka ga spa - si a - ko mu omi - lje!«
 2. Pro - bo - do - še mi ru - ke i no - ge, sve kosti svo - je pre - broji - ti mo - gu.
 3. Ali ti, Go - spodine, dale - ko mi ne budi: sna - go mo - ja, po - hi - ti mi u po - moć!
 4. Koji se Go - spodina bo - ji - te, slavi - te ga potomci I - zra - e - lo - vi!

Musical score for Psalm 22, verses 5-8. It includes a vocal line and piano accompaniment. The lyrics are written below the vocal line.

PJESMA PRIJE EVANĐELJA

Krist postade poslušan

A. Klobučar

Krist posta - de po - slu - šan do smr - ti na kri - žu: za - to ga Bog pre - uz - vi - si i da - ro - va mu

Musical score for the beginning of the Gospel Song. It consists of a vocal line and piano accompaniment. The lyrics are written below the vocal line.

i - - me i - - me nad sva - kim i - me - nom.

Musical score for the end of the Gospel Song. It consists of a vocal line and piano accompaniment. The lyrics are written above the vocal line.