

Sve staze su tvoje

Pokaži mi putove svoje - Spomeni se nježnosti svoje

Antifona (a)

Andelko Igrec

Sve sta-ze su tvo-je, Go - spo - di - ne, lju-bav i i - sti - na._____

The musical score for Antifona (a) is written in G major and 6/4 time. It features a vocal line and a piano accompaniment. The vocal line consists of a single melodic line with lyrics. The piano accompaniment is in a simple harmonic style, supporting the vocal melody.

Antifona (b i c)

Po - ka - ži mi, Go - spo - di - ne, pu - to - ve svo - je!_____

Spo - me - ni se, Go - spo - di - ne, njež - no - sti svo - je!_____

The musical score for Antifona (b i c) is written in G major and 6/4 time. It features a vocal line and a piano accompaniment. The vocal line consists of two melodic lines with lyrics. The piano accompaniment is in a simple harmonic style, supporting the vocal melodies.

Ps 25

1. Po - ka - ži mi Go - spo - de pu - to - ve svo - je, na -

2. Spo - me - ni se Go - spo - de njež - no - sti svo - je i

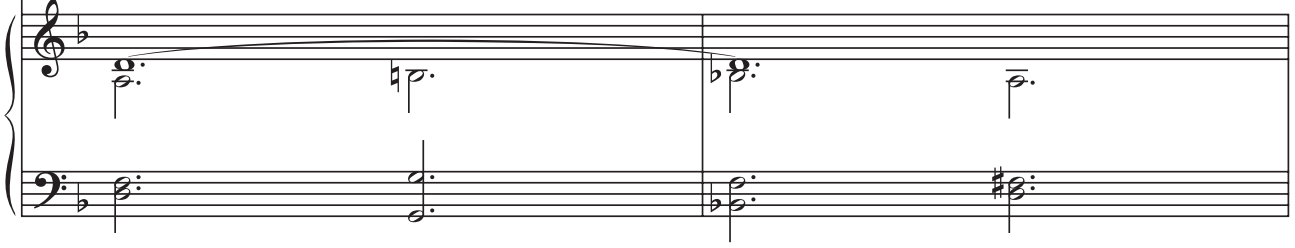
3. Go - spo - din je sa - ma do - bro - ta i pra - ved - nost,

4. O - dag - naj tje - sko - be sr - - - ca mo - ga, iz

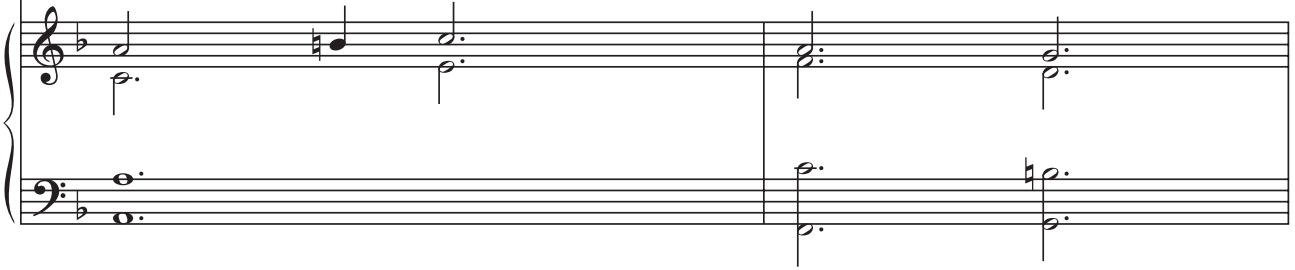
The musical score for Ps 25 is written in G major and 6/4 time. It features a vocal line and a piano accompaniment. The vocal line consists of four melodic lines with lyrics. The piano accompaniment is in a simple harmonic style, supporting the vocal melodies.



1. -u - či me svo - - - jim sta - - - za - ma,
 2. lju - ba - vi svo - - - je do - - - vije - ka,
 3. _____ on griješ - ni - ke na put privo - - - di
 4. bo - jaz - ni mo - jih me i - - - zba - vi!



1. i - sti - nom svo - jom po - u - či me, jer
 2. po svo - joj lju - ba - vi spo - me - ni me se
 3. _____ u _____ prav - - - di poniz - ne vodi _____
 4. Vi - - - di ne - vo - lju moju i muku, o -



1. ti _____ si Bog _____ moj Spa - si - telj. _____
 2. ra - di do - bro - - - te svo - je! _____
 3. ma - le - ne svom pu - tu u - či. _____
 4. - pro - sti sve grije - - - he mo - je! _____

