

# ZDRAVO DJEVO ČISTA

N.CO III, 283-284  
obrađa: Anđelko Klobučar

**Allegro**

Org. *ff*

Ped. *ff*

3

Org.

Ped.

5

Org.

Ped.

7

Org.

Ped.

Detailed description: This system covers measures 7 and 8. The organ part (Org.) consists of two staves. The upper staff has a treble clef, a key signature of one flat (B-flat), and a 4/4 time signature. It begins with a whole note chord of G2, B-flat2, and D3, followed by a half note chord of G2, B-flat2, and D3, and then a quarter note chord of G2, B-flat2, and D3. The lower staff has a treble clef and a key signature of one flat. It begins with a whole note chord of G2, B-flat2, and D3, followed by a half note chord of G2, B-flat2, and D3, and then a quarter note chord of G2, B-flat2, and D3. The pedal part (Ped.) is on a bass clef staff with a key signature of one flat and a 4/4 time signature. It begins with a whole note chord of G2, B-flat2, and D3, followed by a half note chord of G2, B-flat2, and D3, and then a quarter note chord of G2, B-flat2, and D3.

9

Org.

Ped.

Detailed description: This system covers measures 9 and 10. The organ part (Org.) consists of two staves. The upper staff has a treble clef, a key signature of one flat, and a 4/4 time signature. It begins with a whole note chord of G2, B-flat2, and D3, followed by a half note chord of G2, B-flat2, and D3, and then a quarter note chord of G2, B-flat2, and D3. The lower staff has a treble clef and a key signature of one flat. It begins with a whole note chord of G2, B-flat2, and D3, followed by a half note chord of G2, B-flat2, and D3, and then a quarter note chord of G2, B-flat2, and D3. The pedal part (Ped.) is on a bass clef staff with a key signature of one flat and a 4/4 time signature. It begins with a whole note chord of G2, B-flat2, and D3, followed by a half note chord of G2, B-flat2, and D3, and then a quarter note chord of G2, B-flat2, and D3.

11

Org.

Ped.

Detailed description: This system covers measures 11 and 12. The organ part (Org.) consists of two staves. The upper staff has a treble clef, a key signature of one flat, and a 4/4 time signature. It begins with a whole note chord of G2, B-flat2, and D3, followed by a half note chord of G2, B-flat2, and D3, and then a quarter note chord of G2, B-flat2, and D3. The lower staff has a treble clef and a key signature of one flat. It begins with a whole note chord of G2, B-flat2, and D3, followed by a half note chord of G2, B-flat2, and D3, and then a quarter note chord of G2, B-flat2, and D3. The pedal part (Ped.) is on a bass clef staff with a key signature of one flat and a 4/4 time signature. It begins with a whole note chord of G2, B-flat2, and D3, followed by a half note chord of G2, B-flat2, and D3, and then a quarter note chord of G2, B-flat2, and D3.

13

Org.

Ped.

Detailed description: This system covers measures 13 and 14. The organ part (Org.) consists of two staves. The upper staff has a treble clef, a key signature of one flat, and a 4/4 time signature. It begins with a whole note chord of G2, B-flat2, and D3, followed by a half note chord of G2, B-flat2, and D3, and then a quarter note chord of G2, B-flat2, and D3. The lower staff has a treble clef and a key signature of one flat. It begins with a whole note chord of G2, B-flat2, and D3, followed by a half note chord of G2, B-flat2, and D3, and then a quarter note chord of G2, B-flat2, and D3. The pedal part (Ped.) is on a bass clef staff with a key signature of one flat and a 4/4 time signature. It begins with a whole note chord of G2, B-flat2, and D3, followed by a half note chord of G2, B-flat2, and D3, and then a quarter note chord of G2, B-flat2, and D3.

15

Org.

Ped.

19

Org.

Ped.

23

Org.

Ped.

Fine

26

1. Zdra - vo Dje - vo č i - sta i - zvor mi - lo - sti,  
zdra - vo Maj - ko Kri - sta, vre - lo ra - do - sti!

Org.

30

1. K te - bi se u - tje - če - mo, od sveg sr - ca kli - če - mo:

Org.

34

1. po - mo - zi nam sla - tka Dje - vo Ma - ri - jo.

Org.

38

Org. *p*

44

Org.

50

Org.

54

Org.

58

2. Zdra - vo Bo - žja Maj - ko ne - ba kra - lji - ce,  
zdra - vo svje - tlo sjaj - no, zvije-zdo Da - ni - ce.

Org.

62

2. U tvom svje - tlu vo - di nas sa - da i na smr - tni čas,

Org.

66

2. u raj nas u - ve - di Dje - vo Ma - ri - jo.

Org.

70 **Risoluto**

Org. *f*

74

Org.

78

Org.

82

Org.

86

Org.

90

3. Vje - čna hva - la bu - di Bo - go - ro - di - ci,  
za - če - toj bez grije - ha, či - stoj Dje - vi - ci,

94

3. što nam Kri - sta po - ro - di, grije - ha nas o - slo - bo - di,

98

**Da Capo al Fine**

3. sla - va Bo - žjoj Maj - ci, Dje - vi Ma - ri - ji.

# Zdravo Djevo čista

(Za mješoviti zbor)

N: CO

obrada: A. Klobučar

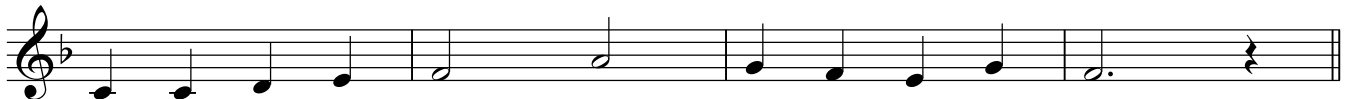
1.



1. Zdra - vo Dje - vo či - sta, i - zvor mi - lo - sti,  
zdra - vo Maj - ko Kri - sta, vre - lo ra - do - sti!



1. K te - bi se u - tje - če - mo, od sveg sr - ca kli - če - mo:



1. po - mo - zi - nam sla - tka Dje - vo Ma - ri - jo.

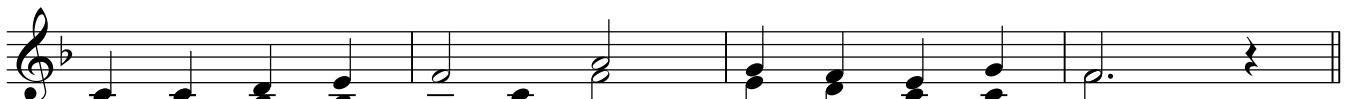
2.



2. Zdra - vo Bo - žja Maj - ko, ne - ba kra - lji - ce,  
zdra - vo svje - tlo sjaj - no, zvi je - zdo Da - ni - ce.



2. U tvom svje - tlu vo - di nas sa - da i na smr - tni čas,



2. u raj nas u - ve - di, Dje - vo Ma - ri - jo.



3.

3. Vje - čna hva - la bu - di Bo - go - ro - di - ci  
za - če - toj bez grije - ha, či - stoj Dje - vi - ci,

3. što nam Kri - sta po - ro - di, grije - ha nas o - slo - bo - di,

3. sla - va Bo - žjoj Maj - ci, Dje - vi Ma - ri - ji.